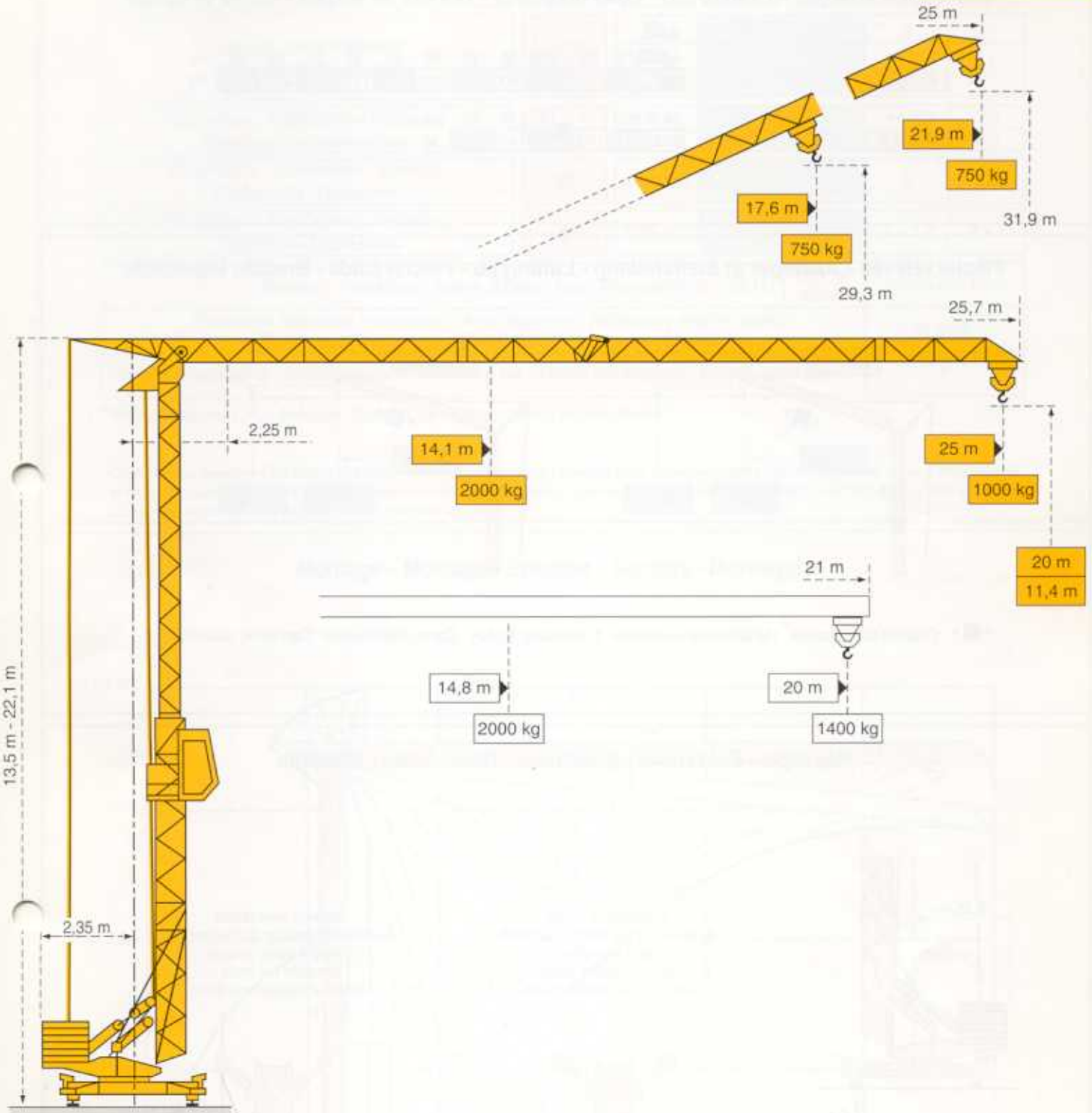


GMR 321 C





GMR 321 C

LKN 1

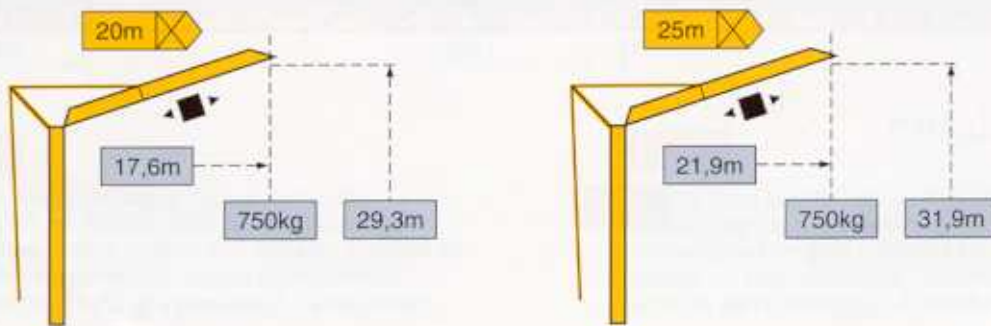
POTAIN 



Courbes de charges - Lastkurven - Load diagrams - Curvas de cargas - Curve di carico

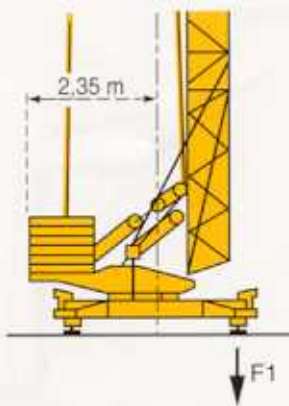
2,25 →	14,1	15	16	17	18	19	20	21	22	23	24	25	m
	2000	1860	1720	1600	1500	1400	1310	1240	1170	1110	1050	1000	kg
2,25 →	14,8	16	17	18	19	20							
	2000	1830	1700	1590	1490	1400							

Fèche relevée - Ausleger in Steilstellung - Luffing jib - Flecha izada - Braccio impennato



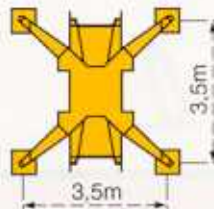
◀ ■ ▶ Chariot distributeur *Verfahrbare laufkatze* Traversing trolley *Carro distribuidor* Carrellino distributore

Réaction - Eckdrücke - Reactions - Reacciones - Reazioni

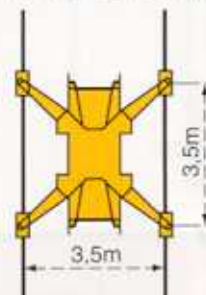


F1	● 13t	■ 8t
	8,9t	

Version sur vérins
Ausführung auf Abstützspindeln
Jacks-version
Versión sobre gatos
Versione su stabilizzatori



Version voie droite
Ausführung gerade Schienenbahn
Straight track version
Versión vía recta
Versione traslazione dritta




● En service
■ Hors service


● In Betrieb
■ Ausser Betrieb


● In service
■ Out of service


● En servicio
■ Fuera de servicio


● In servizio
■ Fuori servizio

 A vide sans lest ni train de transport avec fèche et hauteur maximum.

 Ohne Last, Ballast und Transportachse, mit Maximalausleger und Maximalhöhe.

 Without load, ballast or transport axes, with maximum jib and maximum height.

 Sin carga, sin lastre, ni tren de transporte, flecha y altura máxima.

 A vuoto, senza zavorra ne assali di trasporto con braccio massimo e altezza massima.

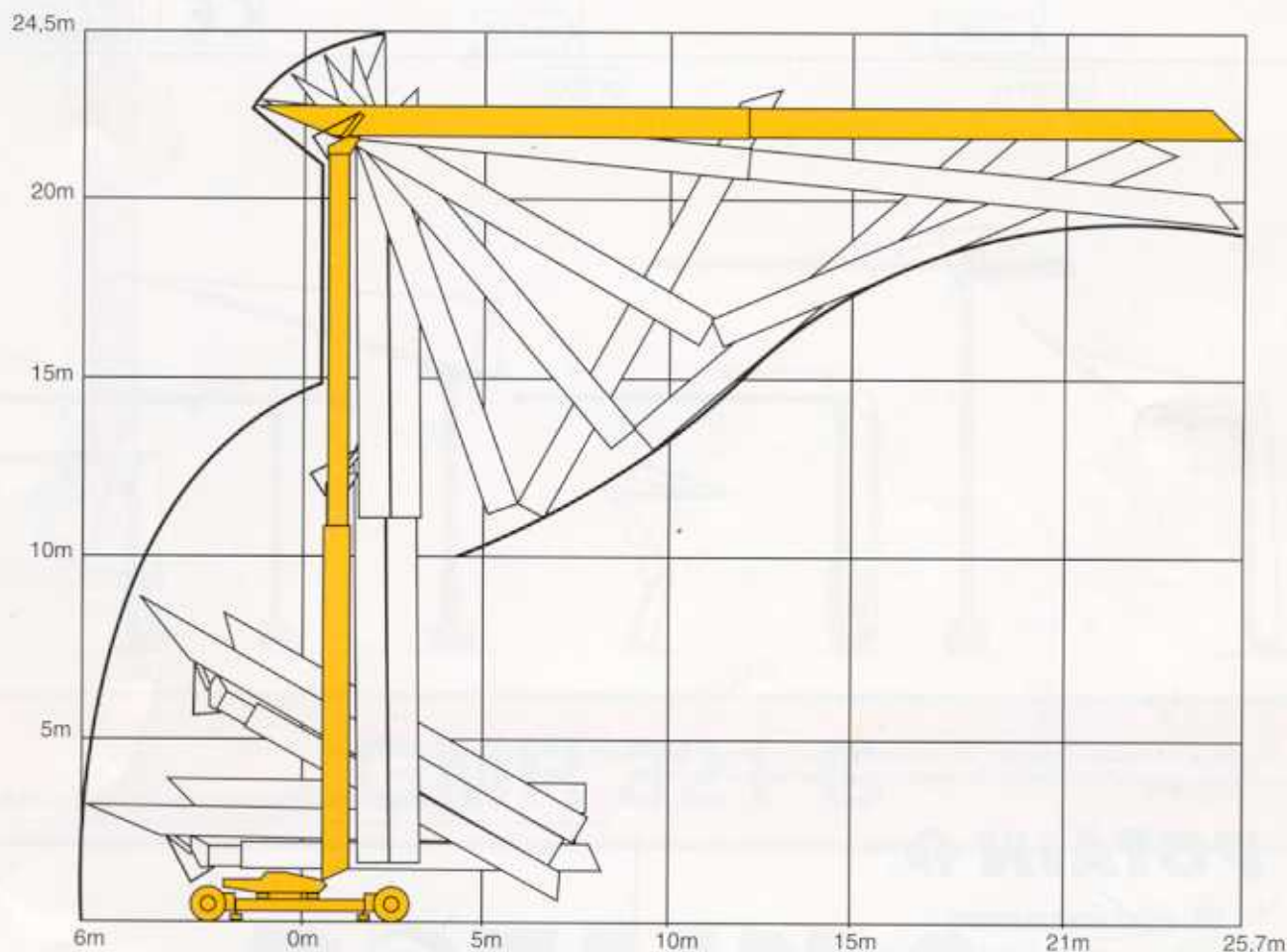
Mécanismes - Antriebe - Mechanisms - Mecanismos - Meccanismi

			m/mn	kg	ch -PS hp	kW
Levage <i>Heben</i> Hoisting <i>Elevación</i> Sollevamento	▲ 15 TD ● PC 10 ▼		8	2000	5	3,7
			25	2000	15	11
			50	1000		
Distribution - <i>Katzfahren</i> - Trolleying <i>Distribución</i> - Distribuzione		3D1 V5	35		4,5	3,3
		3D2 V5	22 - 44		4,5	3,3
Orientation - <i>Schwenken</i> - Slewing <i>Orientación</i> - Rotazione		RCV 20	0 → 1 tr/mn - U/min - rpm		3	2,2
Translation - <i>Kranfahren</i> - Travelling <i>Traslación</i> - Traslazione		TVD 121	25		2 x 1,4	2 x 1
Réseau - <i>Netzstrom</i> - Mains supply - <i>Red</i> - Rete elettrica			50 Hz	CEI 38 IEC 38	400V(+6%-10%)	
Puissance électrique nécessaire - <i>Anschlusswert</i> - Necessary electric power <i>Potencia eléctrica necesaria</i> - Potenza elettrica necessaria					20 kVA	
Groupe électrogène - <i>Stromaggregat</i> - Generator set - <i>Grupo electrogeno</i> - Gruppo elettrogeno					*	

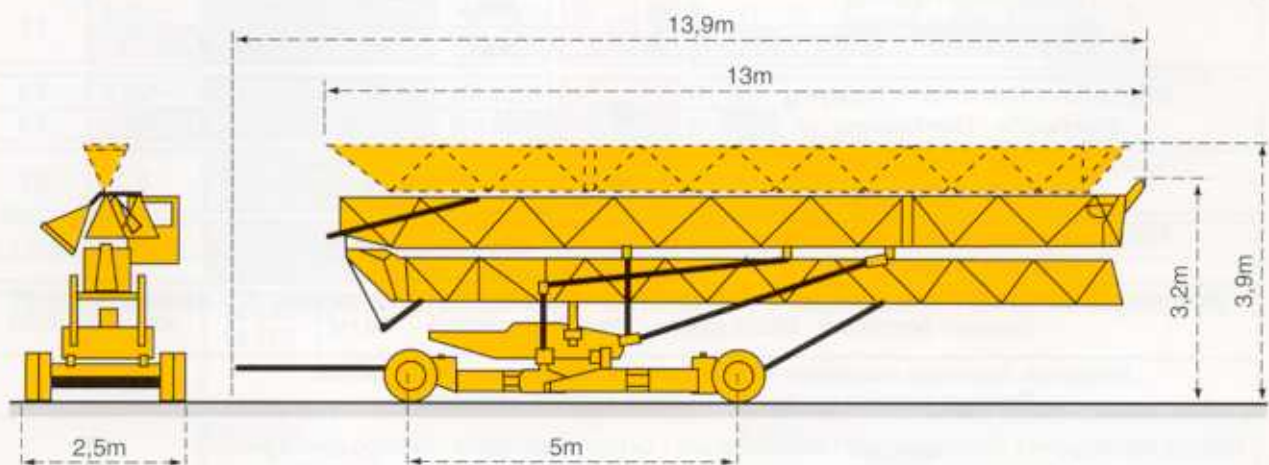
*Nous consulter - *Auf Anfrage* - Consult us - *Consultarnos* - Consultateci

Conforme aux directives CEE 84/534 et 87/405 sur le niveau acoustique - *Gemäss EWG-Richtlinien 84/534 und 87/405 für den Schall- Leistungspegel*
In compliance with the EEC 84/534 and 87/405 Instructions on noise level - *Conforme con las directivas CEE 84/534 y 87/405 sobre el nivel acustico*
Conforme alle direttive CEE 84/534 e 87/405 sul livello acustico

Montage - Montage - Erection - Montaje - Montaggio



Transport - Transport - Transport - Transporte - Trasporto



Version transport lestée : Nous consulter
 Transport mit Ballast, bitte bei uns rückfragen
 Road transported version with ballast : Consult us
 Versión transporte con lastre : Consultarnos
 Versione trasporto gru zavorrata : Consultateci

Version semi-portée : Nous consulter
 Ausführung als Sattelaufleger : Auf Anfrage
 Tractor towed version : Consult us
 Versión en semi-remolque : Consultarnos
 Versione semi rimorchio : Consultateci



NF E 52081 - 82
 DIN 15018.H1 B3



Document pour usage commercial uniquement - Benutzung dieser Unterlagen nur für Verkaufszwecke - Document for commercial use only -
 Documento para uso comercial unicamente - Documento per uso commerciale solamente

Copyright.Reproduction interdite © POTAIN 1996

POTAIN

GRUPE LEGRIS INDUSTRIES

18.Rue de Charbonnières, B.P. 173-F 69132 ECULLY Cedex
 Tél. (33)04.72.20.20.20 - Fax (33)04.72.20.20.00

POTAIN GmbH	Deutschland	Tel : 06.105.704.0
POTAIN U.K.	Great Britain	Tel : 0895.44.52.61
Simma POTAIN	Italia	Tel : 02.97.96.71
POTAIN Portugal	Portugal	Tel : 02.968.08.89
POTAIN Belgium	Belgique	Tel : 15.42.08.80
Zhangjiagang POTAIN	China	Tel : 520.877.451

GMR 321 C

Réf. 1996.43. LKN · 1